

K-1st Grade

SCIENTISTS ON THE GO

How are you similar to a wolf?

Wolves and humans have many similarities and many differences. Put an X on the words that only go with humans. Circle the words that go with humans and wolves.

Home

Family

Water

Food

Mammal

Babies



We'd love to see your finished activity!

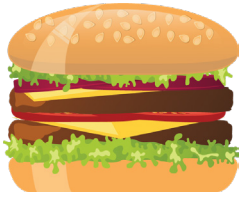
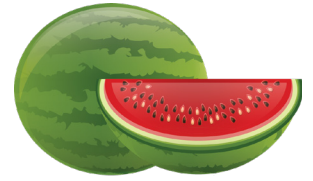
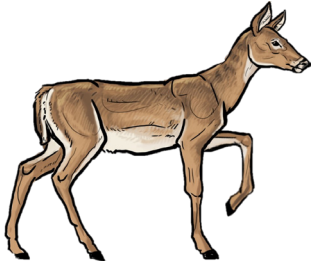
Email a photo to info@wetsciencecenter.org to receive a prize.



What do wolves eat? What do humans eat?

Draw lines from the wolf and the humans to each item they eat.

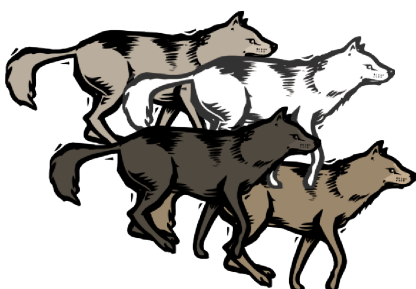
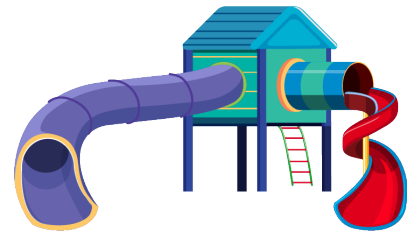
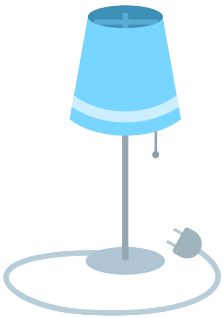
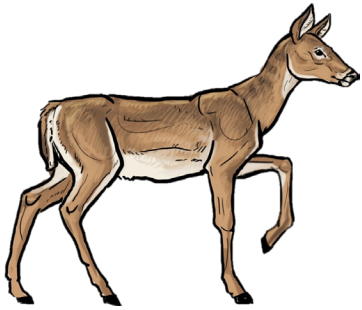
(c)Wolf Haven International 2020



(c)Wolf Haven International 2020

What do wolves and humans need to survive?

Draw lines from the wolf and the humans to the item they need.







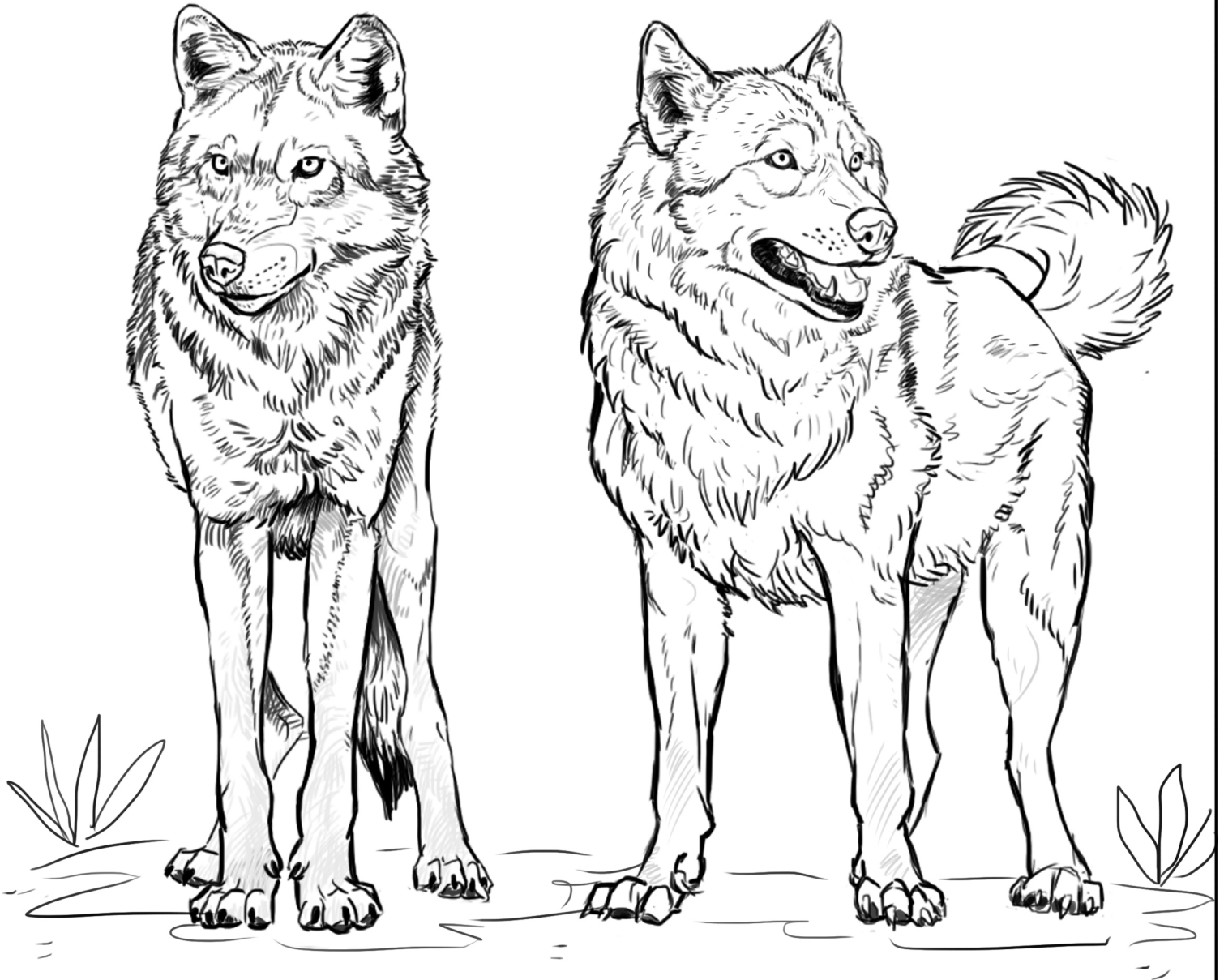
INTERESTING WOLF FACTS

Wolves are...	Part of the Canine (dog) family Carnivore (meat eater) Predators (hunt for their food/prey)
Average length	Male: 5-6.5 feet (nose to tip of tail) Female: 4.5 to 6 feet
Average height	26 to 32 inches
Average weight	Males: 80-110 lbs. Female: 60-80 lbs.
Average paw size	4 inches wide by 5 inches long
Life span	5-9 year average in the wild 14-15 years in captivity
Pelage (color)	Any shade of gray, brown, black, white, or tan
Number of teeth	42
Breeding season	Mid January to Mid April (depending on climate-the colder the climate, the later the breeding season)
Average Weight at birth	1 pound
Average Litter size	4-6 pups
Pack size	6-8 members on average
Pack territory/ size	10-1000 square miles per animal
Speed	6 miles on average but can reach speeds of 35 mph during a chase
Common prey	Caribou, elk, deer, bison, musk-oxen, sheep, goats. Also will prey on rodents, beavers, fish, and birds. Basically whatever is available when ungulate are scarce.
Main threats to survival	Loss of habitat due to destruction and development by humans, persecution by humans.



WOLF HAVEN
INTERNATIONAL

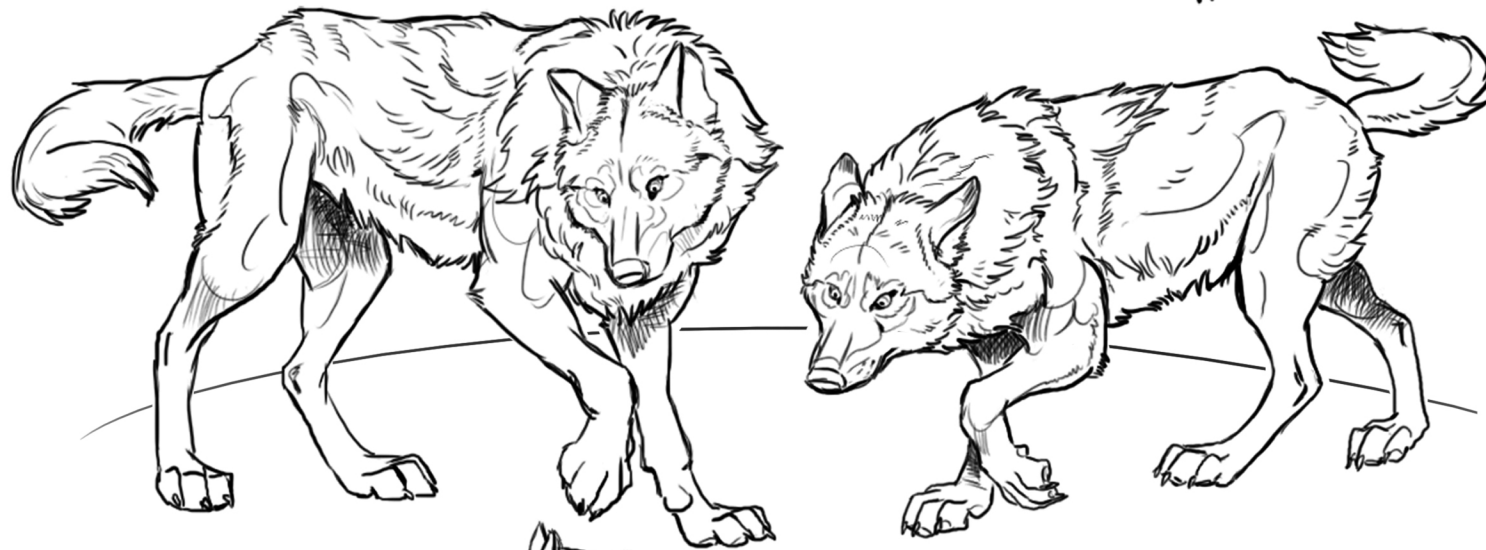
Differences between wolf and dog



- Adult's eyes are yellow or amber.
- Tail drops down.
- Very long legs, narrow chests and and big paws.
- Varied eye colors, including blue in adults.
- Tail on many dog kinds curve upwards.
- Barrel chest, shorter legs smaller paws.



WOLF HAVEN
INTERNATIONAL



A pack: Life as a family

Wolf Word Search

O D W B I S O N F S
Y E O T I S V Q O A
Q N L S M E L L O L
M S F E H U N T D M
H P R E D A T O R O
O A M A M M A L P N
W C Z F D V Q P U D
L E D V F Q Q C P E
M I F A M I L Y S E
B G F A N W A T E R

predator

salmon

water

wolf

family

space

howl

deer

mammal

bison

pups

den

smell

hunt

food