

SCIENTISTS ON THE GO

How do wolves communicate?

Wolves communicate to each other just like people do. Wolves communicate in three main ways. They use sound, smell, and body language.

The first way wolves communicate is through **sound**. Wolves howl, huff, bark, whine, and whimper. Read why wolves make those sounds and practice each sound!



Barking (not quite like a dog) is a sign of stress and fear. This wolf does not like how close another wolf is to his food.

What's another animal that barks?

Huffing is a sign of something bothering them. This wolf is huffing because she is concerned about something too close to her home.

What's another way animals tell others they are too close?



Whining is a lot like when a dog whines – to get attention from another wolf and show off something another would have – like food.

When is a time a person might whine?



We'd love to see your finished activity!

Email a photo to info@wetsciencecenter.org to receive a prize.



Growling (like a dog) is a warning to others. In this picture the wolf is responding to the other wolf's whining.

What's another animal that growls?



Howling is used in many ways, but not to howl at a full moon. Wolves may howl on night's with full moons, but that's because they can see later into the night when the moon is bright. Wolves howl to:

- 🐾 Gather their pack for a hunt.
- 🐾 Celebrate a good hunt.
- 🐾 Warn another wolf or pack that they are too close.
- 🐾 To mourn their loss.

How do you celebrate?



The second way wolves communicate is through **smell**. Wolves have a much better sense of smell than humans. In fact, wolves can smell their prey sometimes 4 miles away.



Marking their territory. They pee and poop around the edge of their territory. They also scratch the ground with their feet, leaving behind their smell.

How do humans know who's space something is?

Roll on smells. Wolves think the smellier the better and even roll in stuff to smell! Scientists are not sure why they do this. Maybe it's to tell others what they found or maybe to hide their own scent.

If you were a wolf, what smell would you roll in?



The third way wolves communicate is through **body language**. Label each picture with the vocabulary words playful, dominant, and submissive.

Playful - wagging tail, ears forward, play grin, play bow

Dominant - fluffed fur, animal is relaxed, tail held high, head high, eyes forward, mouth relaxed

Submissive - animal rolls on back, shows his belly, tail often tucked, head down



Answer Key
 D, P, S
 S, D, P
 P, S, D



Wolf Words Scramble

Unscramble the letters to form words about wolves. At the bottom, fill in the boxes with the letter from the matching numbered box to find out what wolves need.

LAIMYF

SEMLL

CASPE

DATPORRE

TuHn

WHLO

SPuP

MMLMAA

NED

DOOF

WAETR

Wolves need

1	2	3	4
---	---	---	---

5	6	7	8	9
---	---	---	---	---

Answers: family, smell, space, predator, hunt; howl, pups, mammal, den, food, water – EACH OTHER

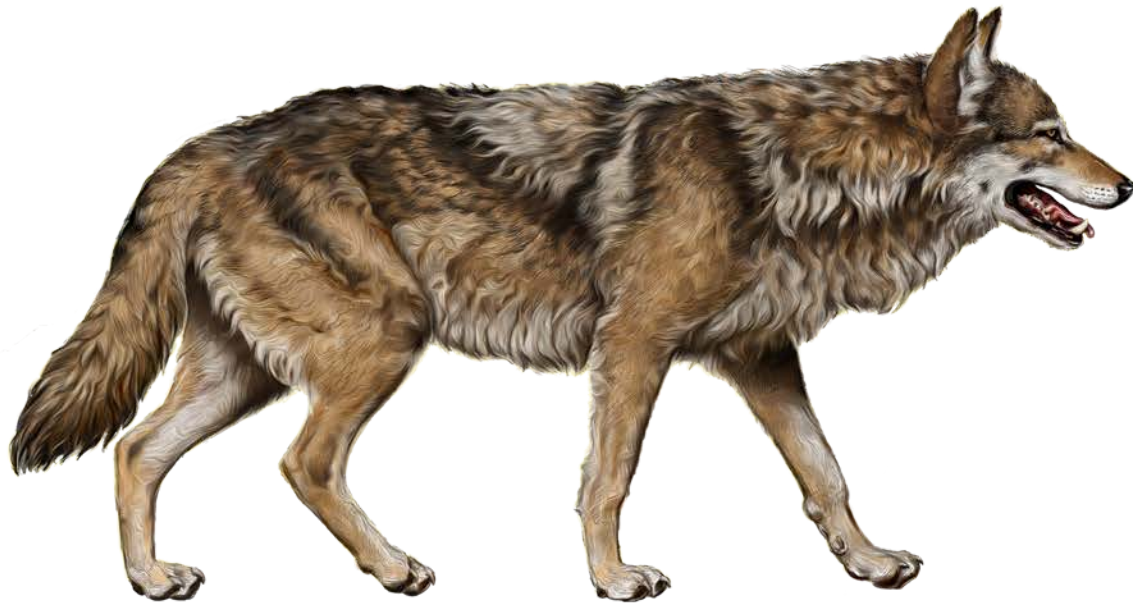
(c)Wolf Haven International 2020





INTERESTING WOLF FACTS

Wolves are...	Part of the Canine (dog) family Carnivore (meat eater) Predators (hunt for their food/prey)
Average length	Male: 5-6.5 feet (nose to tip of tail) Female: 4.5 to 6 feet
Average height	26 to 32 inches
Average weight	Males: 80-110 lbs. Female: 60-80 lbs.
Average paw size	4 inches wide by 5 inches long
Life span	5-9 year average in the wild 14-15 years in captivity
Pelage (color)	Any shade of gray, brown, black, white, or tan
Number of teeth	42
Breeding season	Mid January to Mid April (depending on climate-the colder the climate, the later the breeding season)
Average Weight at birth	1 pound
Average Litter size	4-6 pups
Pack size	6-8 members on average
Pack territory/ size	10-1000 square miles per animal
Speed	6 miles on average but can reach speeds of 35 mph during a chase
Common prey	Caribou, elk, deer, bison, musk-oxen, sheep, goats. Also will prey on rodents, beavers, fish, and birds. Basically whatever is available when ungulate are scarce.
Main threats to survival	Loss of habitat due to destruction and development by humans, persecution by humans.

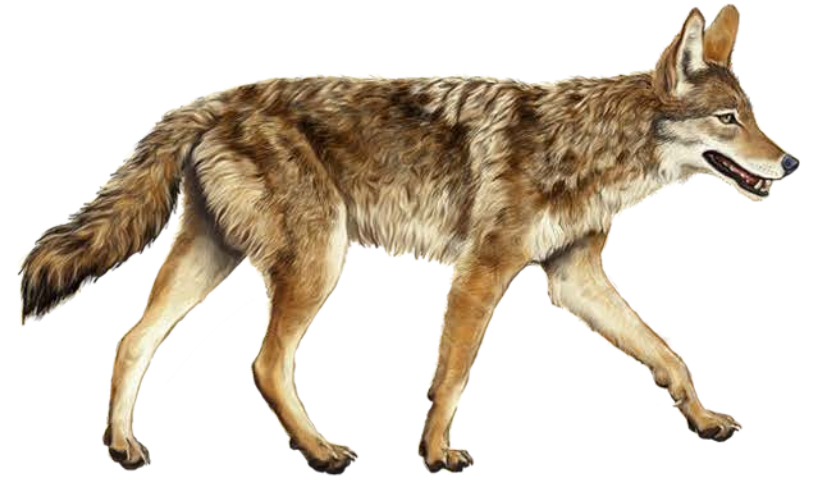
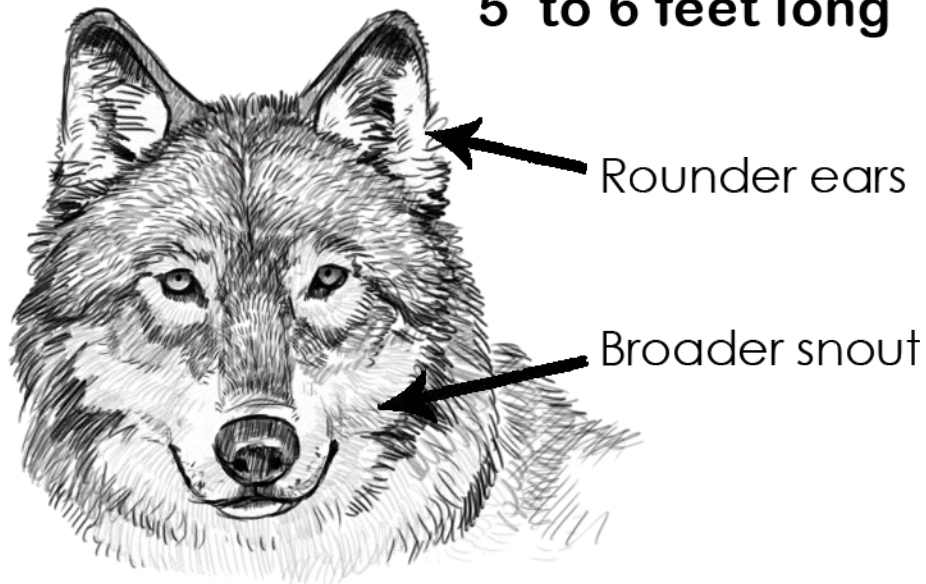


GRAY WOLF

Color: light gray to black

Weight: 70-120 pounds

Dimensions: 2.5 to 3 feet tall,
5 to 6 feet long

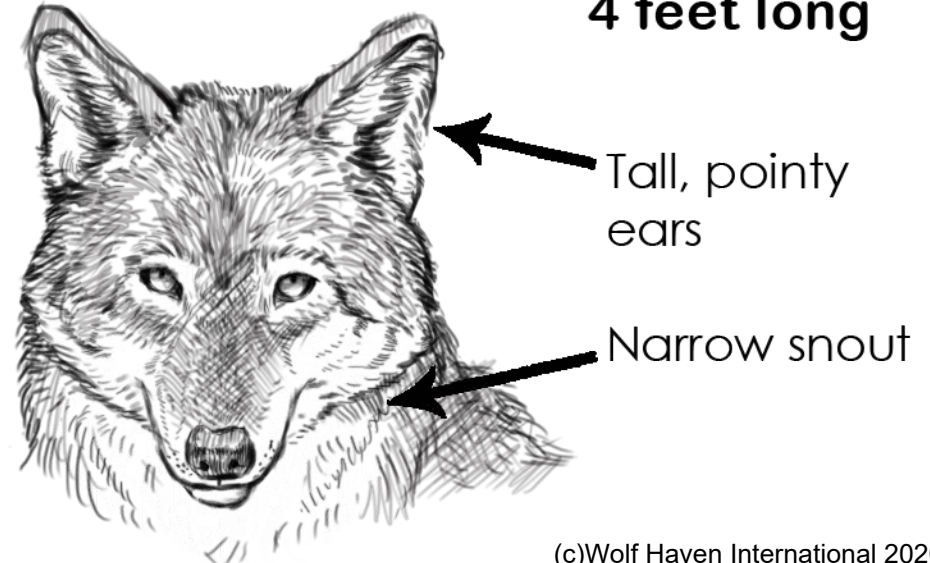


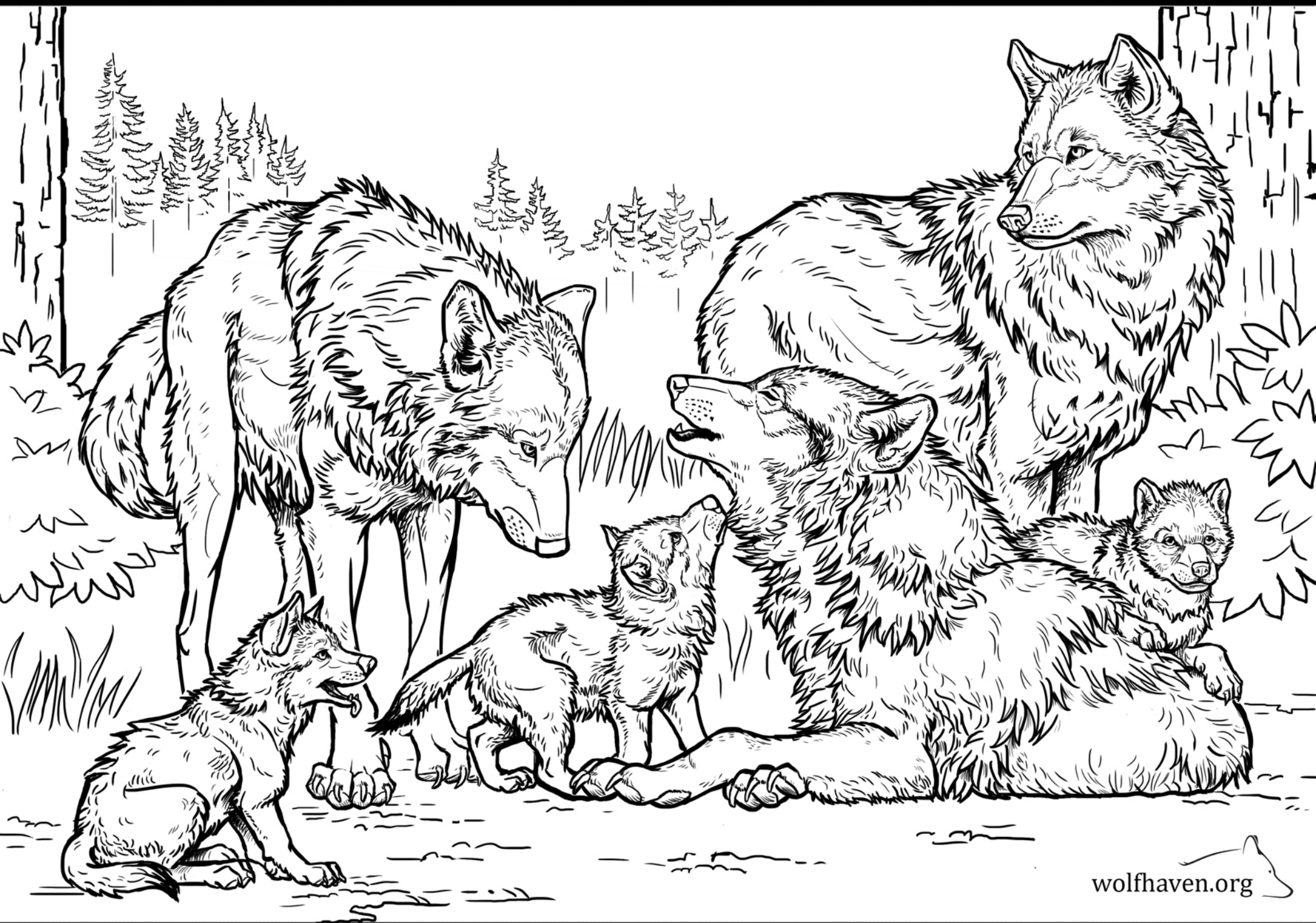
COYOTE

Color: light gray to brown

Weight: 20 to 50 pounds

Dimensions: 1.5 feet tall,
4 feet long

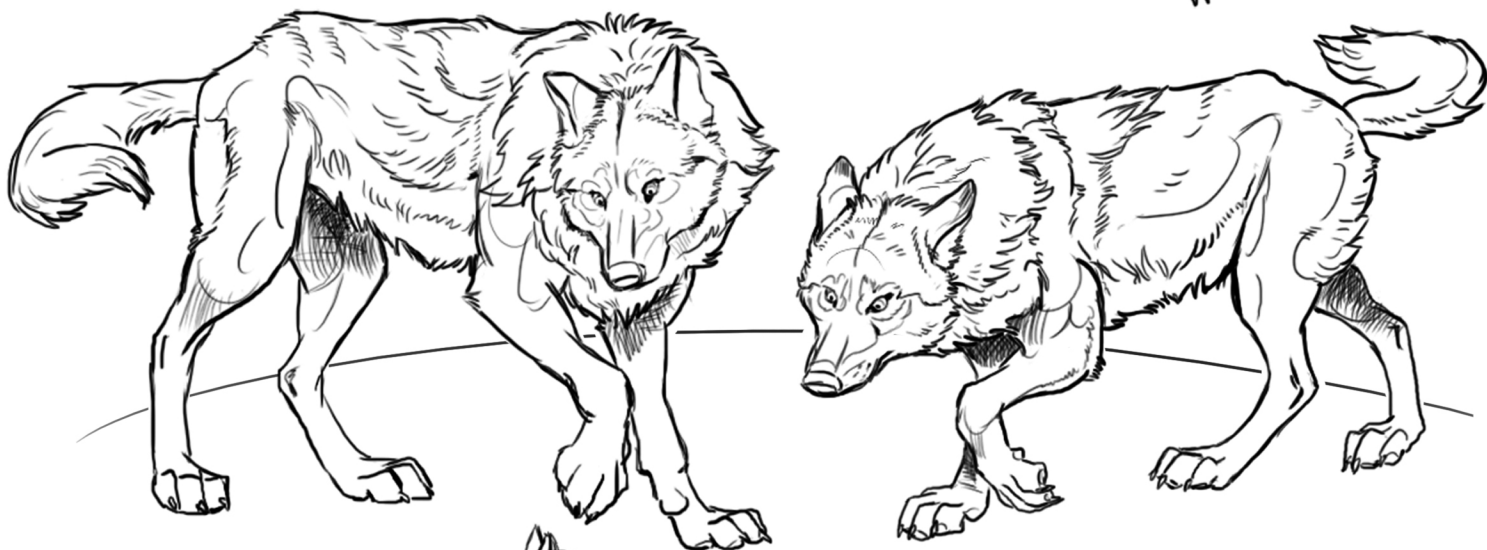




wolfhaven.org



WOLF HAVEN
INTERNATIONAL



A pack: Life as a family

WOLF MASK

Just color, cut
and put a
string on it!



WOLF HAVEN
INTERNATIONAL

wolflhaven.org

(c)Wolf Haven International 2020